



.....  
CANTERBURY  
**ROMAN**  
• MUSEUM •

# VISUAL STORY

# VISUAL STORY FOR CANTERBURY ROMAN MUSEUM

This is a guide for getting into and around Canterbury Roman Museum. It also helps visitors know more about the inside of the museum before visiting.

Canterbury Roman Museum, is a fascinating and family friendly insight into life in Roman Britain. It houses the remains of an original Roman Town House and is a Scheduled Ancient Monument.



.....  
CANTERBURY  
**ROMAN**  
• MUSEUM •  
\_\_\_\_\_

# Getting here:

**Canterbury Roman Museum**  
**Butchery Lane**  
**Canterbury**  
**CT1 2JR**

Phone: **01227 785 575**

Email: **[romanm@canterbury.gov.uk](mailto:romanm@canterbury.gov.uk)**

Orange Street accessible car park is near the museum and has 14 Blue Badge spaces. Parking is free for four hours.

The bigger, St Radigunds car park is a seven minute walk away post code: CT1 2AE

The main bus station is a 10 minute walk away from the top of the High Street, behind the White Friars Shopping Centre.

The nearest train station is Canterbury West, which is an 11 minute walk away.



# Entrance

This is the entrance to the Roman Museum. You will see two large yellow banners above the doors so the museum is easy to find.

There is a mosaic floor as you enter.







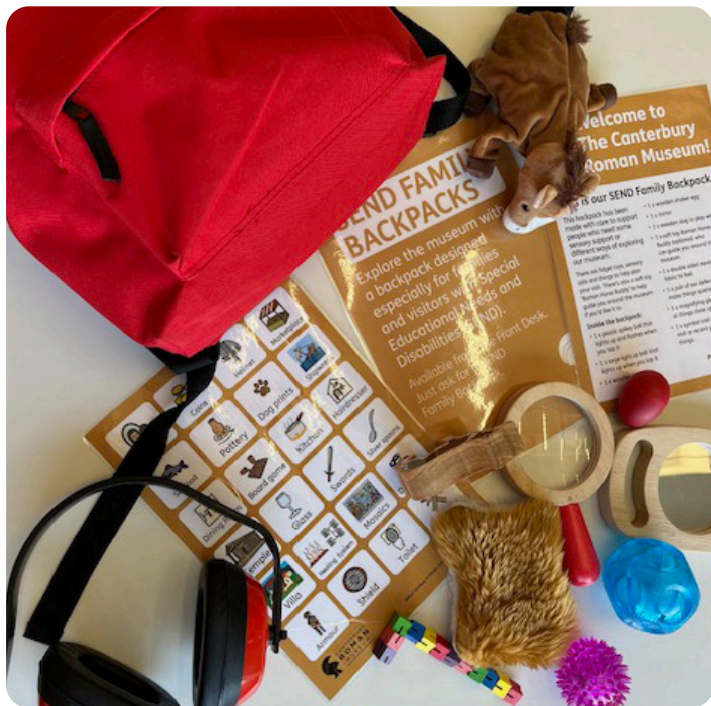


# Information and ticket desk

As you enter the museum, there is an Information and Ticket Desk. This is where you can buy a ticket.

There is always a member of staff here. You can ask questions.

You can also borrow a free sensory backpack from here.







# Gift shop

On the right hand side of the desk is a small gift shop. The entrance to the lift is here too.





# Entering the museum

The museum is downstairs.

You can take the stairs or the lift.

The stairs are to the left of the Information and Ticket Desk.

The lift is by the gift shop.





# Roman models – alternative route

The museum has several wax work models.

If you do not want to see these models, you can ask the member of staff to show you the route to avoid them.

The route starts at the area you can handle objects and finishes at the Everyday Life and Death Gallery.

When you are finished you can exit the museum via the stairs or the lift.





# Toilets

**The toilets are located opposite the lift.**

**There is one cubicle.**

If you would like to find the toilet and are coming down using the stairs, turn right at the bottom before you enter the museum.

The lights inside the toilet are motion-activated and will go off if there is no movement for a short time. If the lights go off, make a movement to turn them on again.

There is a hand dryer.





If you have come down the stairs, you will have open doors leading you into to the Museum.

If you have come from the lift, turn right as you walk out and then come past the coat hangers. From here you will see the doors to enter. Go through the door with 'This Way' above it.





In the first room you can find out information on early Roman Canterbury.

There is a free audio tour if you would like to download and use. You can find out more about objects that have a headphone logo next to them.



Once you are ready, use the door to move into the next room.





# Roman market

The next room is displayed as a Roman market. There are model stalls and wax models of people to help us to imagine what it would have been like.

There is also a small area for museum activities such as Roman Coin bashing (this can be noisy). The staff member will tell you if there are special events on.

When you are finished you can move into the next room through the doorway.



# Roman House

This room is set up as a Roman House. You can walk around the space and even sit down.

You can play a roman game. From here you can walk into the kitchen, or exit via the door you came in.







# Roman House

Before you leave the Roman House room, you can see what Roman hair and clothing care looked like, including old combs.

You can then leave via the door into the next room.





There is a small display here, and when ready you can turn right and walk straight ahead.

At the end of the corridor, follow the arrow left to the next room.





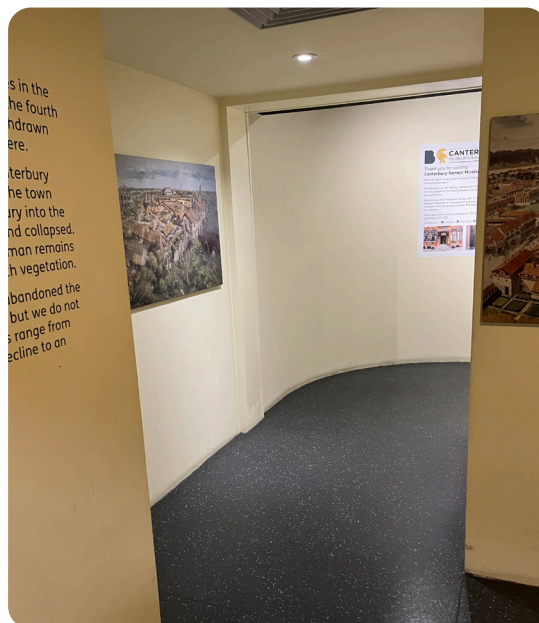
You are now in the Everyday Life and Death gallery. This tells us about how the Romans lived their lives and how they buried people at the end of their life.

Once you are ready you can follow the corridor on into the next room.





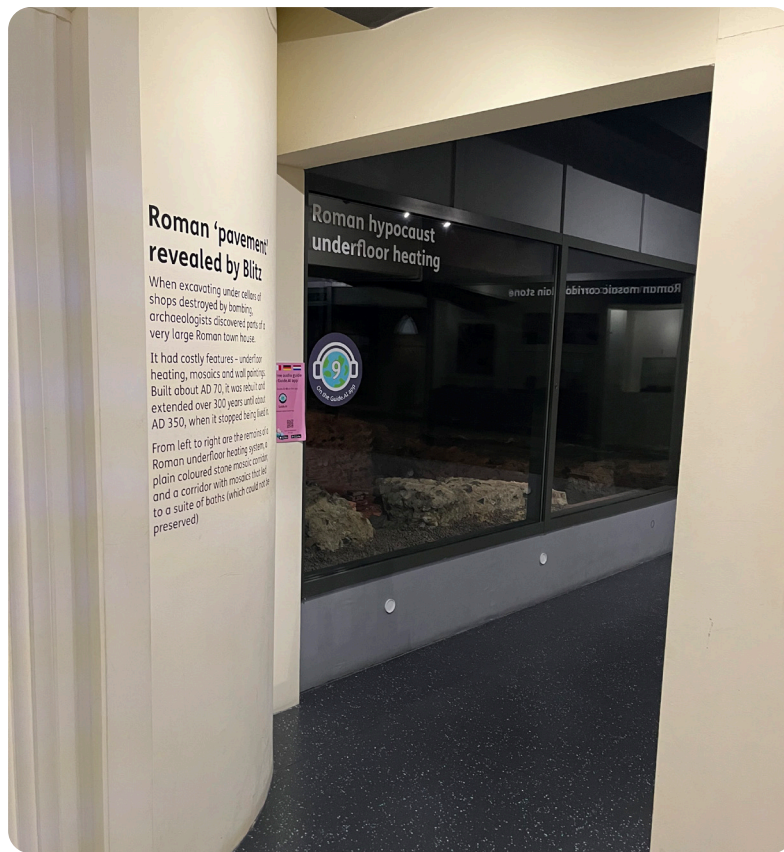
Follow the corridor around the wall and you will come to a new room.







This room shows interesting historic items and a model of a desk. When you are ready turn left at the the end of the room.



You are now in a large gallery, displaying the Roman mosaic and underfloor heating system!  
Follow the space around to the right.







You can watch a short film on the mosaic if you would like.

Once you are ready you can walk left, past the Roman soldier sticker on the wall, into the next space.





### Roman mosaics

Mosaics are patterns or pictures made from lots of small pieces. Roman mosaics used cubes (called *tesserae* in Latin) made of different coloured stones or tile. Tools and technique are described in the case on the right.

The mosaic on the far right, with two-handled cup design, was discovered in 1868 when digging trenches for new drainage, eight feet (2.4m) below Burgate Street. Other mosaic floors, with black, white and red cubes, were found beside and below it. The city authorities could only preserve this section of mosaic for the museum. They had difficulty removing it as the *matrix* (material joining the *tesserae*) had disintegrated. Plates of sheet iron had to be pushed underneath the mosaic to raise it.

The Roman house floor on the left is covered with a paving of plain stone *tesserae* and includes three mosaic insets. These have geometrical patterns. The floor is exactly as found by the archaeologists and left by the Romans. It was originally flat – the undulating surface you see has been caused by earth movements over the centuries.

You are now heading into the interactive 'hands on' area.





# Activities in the hands on area

Make a mosaic

Try on a Roman costume





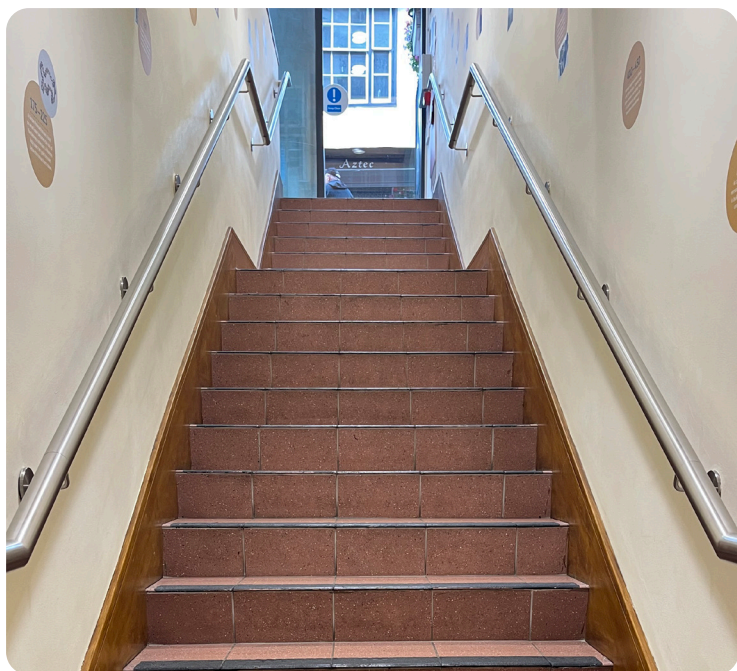
# Activities in the hands on area

Handle replica and real artefacts

Try on a Roman Helmet







From here, you can leave the museum via the doors and exit via the lift or the stairs.

We hope you enjoyed your visit to the Roman Museum today.

You can find out about our special and events on our website:

**[canterburymuseums.co.uk](http://canterburymuseums.co.uk)**

 @Canterbury Roman Museum

 @CRomanMuseum

