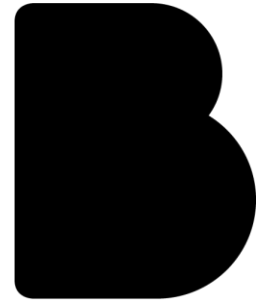


Visual Story



THE BEANEY
HOUSE OF ART
& KNOWLEDGE

For visitors who would like to know more about visiting The Beaney (before or during their visit) including a visual guide to inside of the museum and galleries.

The Beaney – Visual Story

Getting here:

Orange Street accessible car park is behind the museum and has 14 Blue Badge spaces. Parking is free for 4 hours.

The bigger, St Radigans carpark is a 6 minute walk away
post code: CT1 2AE

The main bus station is a 10 minute walk away from the top of the High Street, behind the White Friars Shopping Centre.

The nearest train station is Canterbury West, which is a 10 minute walk away.

Entrances

The museum has **two entrances**, the **old front** door is on The High Street in Canterbury and the new accessible entrance is on Best Lane, which is around the corner.



The High Street
Entrance



The accessible
entrance

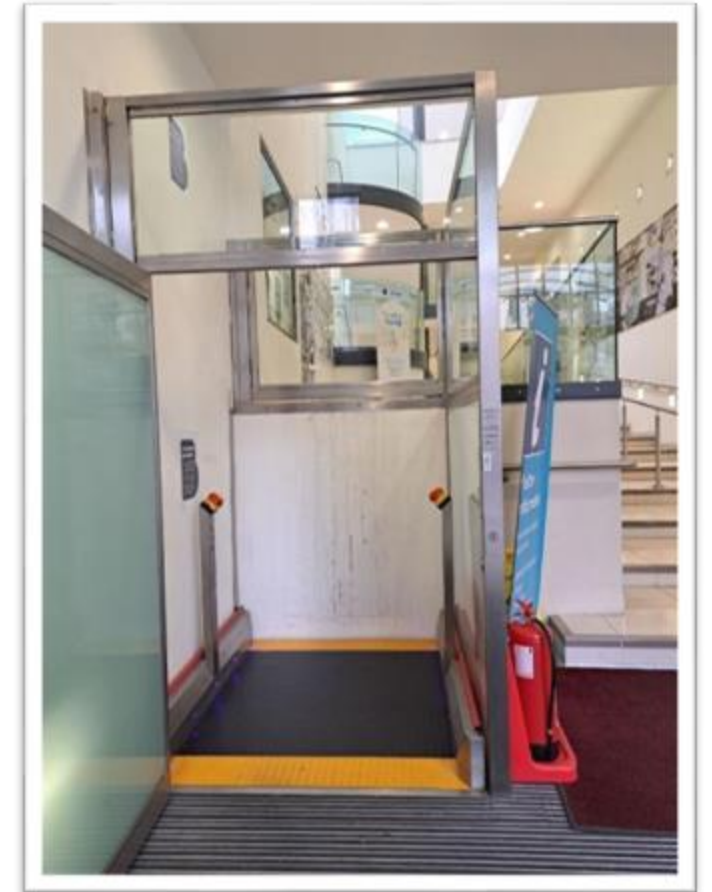
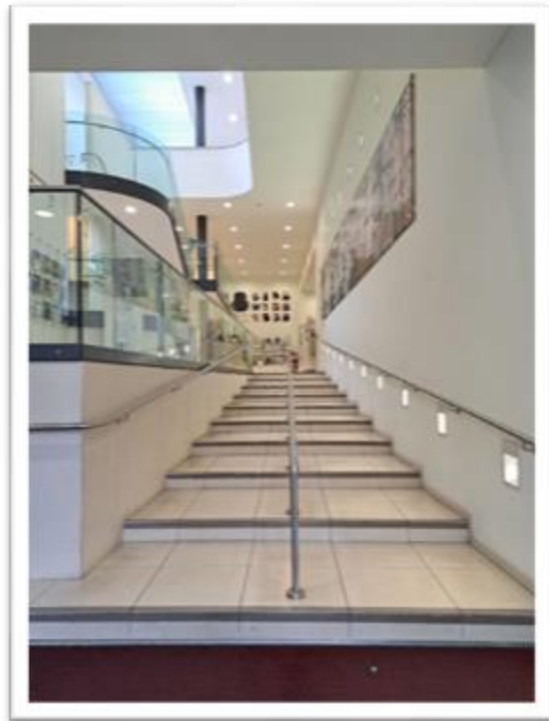
- ✓ Assistance dogs are welcome in the museum
- ✓ **Photography is allowed** in The Beaney's galleries.
- ✓ Accessible free to use toilets are available.
- ✓ Lifts are available inside the building.

Accessible entrance – (via Best Lane)

The accessible entrance has automatic doors.

Inside there are 10 long 'easy going' steps going up to the Visitor Information Desk.

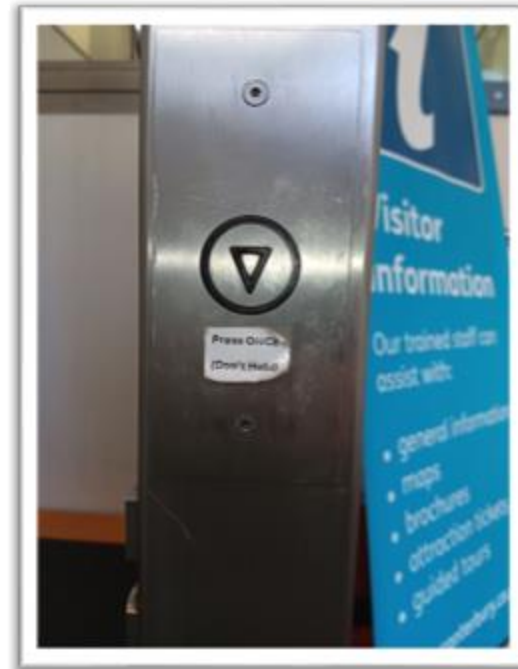
Go up the stairs or in the lift up to the next level.



There is also a lift on your left to use instead of the stairs.

Using the Lift

- To use the lift press the button once.
- If you need assistance you can ring the bell and a member of staff will come and help you.
- The door opens automatically.
- Instructions can be found inside the lift.



Coming into The Beaney

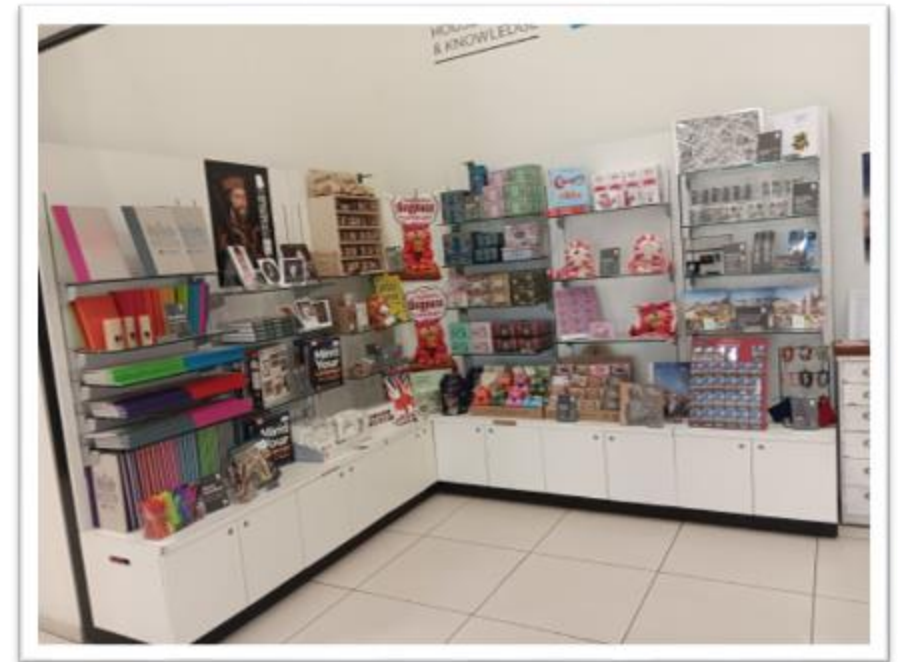
On the left is the Library which is not part of the Museum, but you can go in there if you like.

There is also a stand of useful leaflets of attractions and events that are on in the local area.

On the right is the **Visitor Information Desk**.

Straight ahead there is small shop selling gifts.

You can pay for items at the Visitor Information Desk.



Visitor Information Desk



The Visitor Information Desk always has a member of staff working here.

They wear orange lanyards and can offer you help with finding your way, or telling you what you can find in the museum.

The Beaney is free to visit, but tickets for family trails, which happen in the twice a year can be bought here.

You can also borrow a **free sensory backpack** from the desk, please ask the member of staff.

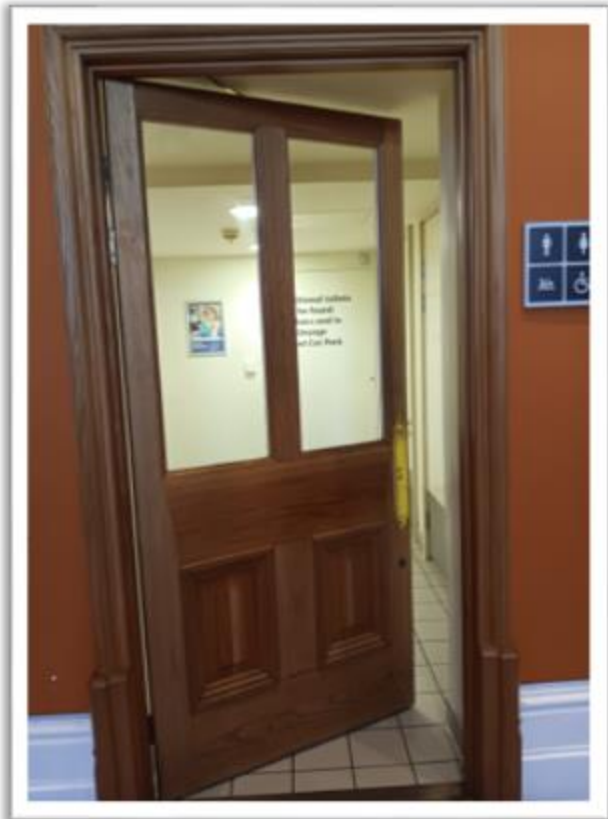
Changing Places Toilet

There is a changing places toilet next to the visitor information desk.

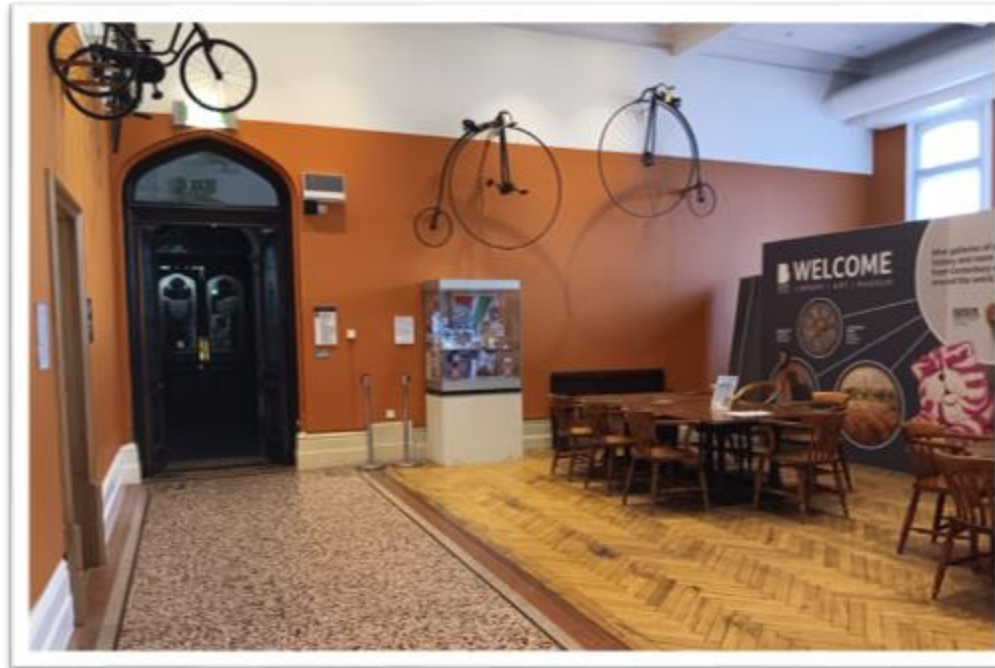
Speak to a member of staff at the desk to get the key to use this.



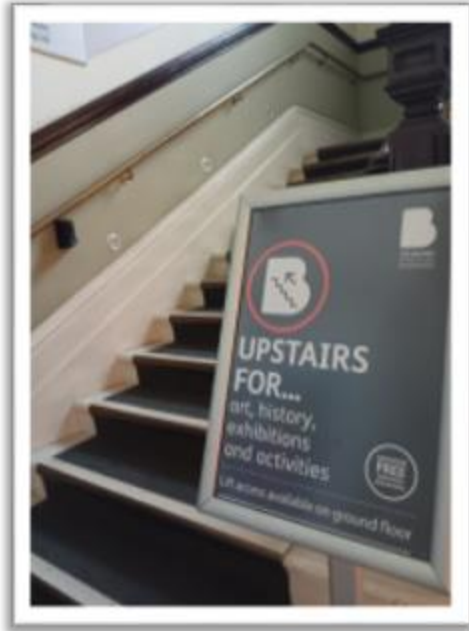
Through the door on the right is **The Orange Room**. It has old bicycles on the wall! If you visit in lunchtime during term time, you may find a class of school children eating their lunch here. If not, there are often chairs and tables available for you to sit at.



The entrance to the **public toilets** are also here. There are two toilets, both can be used by men or women and one is a disabled access toilet. The other one has a baby change table in it.



Now leave the Orange Room through the next doorway, you will see a big staircase on your right. This takes you to the upstairs galleries. There are 32 stairs. You can stay on the ground floor and turn left into the **The Garden Room** gallery.



The Garden Room gallery has paintings and objects about animals, based on the work of artist Thomas Sidney Cooper.

There is an easel you are allowed to draw on.



There is also a **small shop** and **desk** in this room, where a **member of staff sits**. You can ask them questions about the museum.

Leave the gallery by the other door. Straight ahead of you is **The Front Room**, this is a temporary exhibition space.



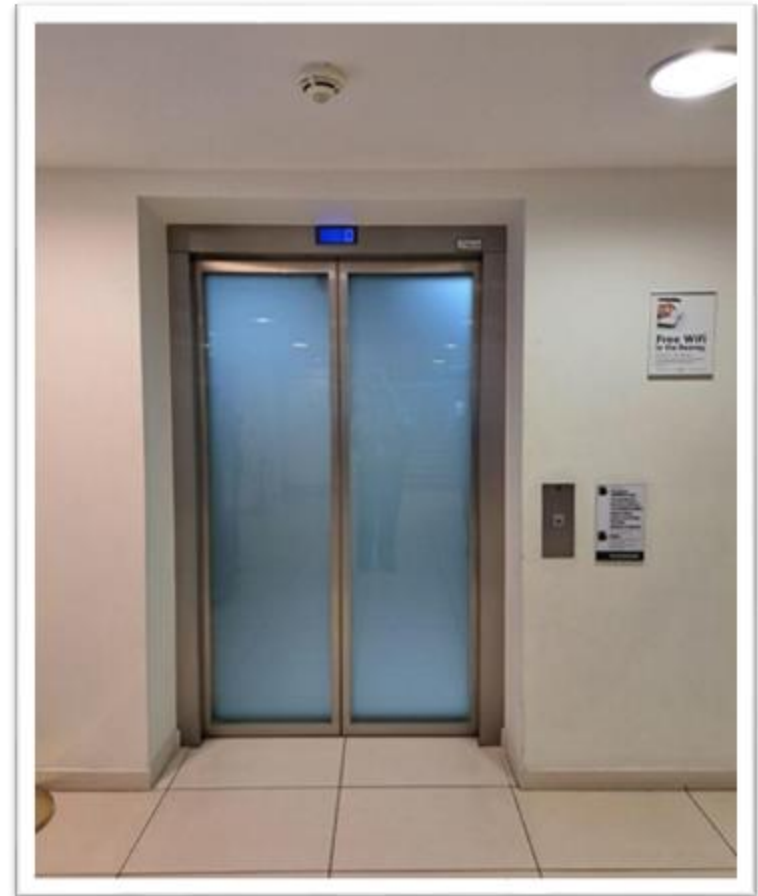
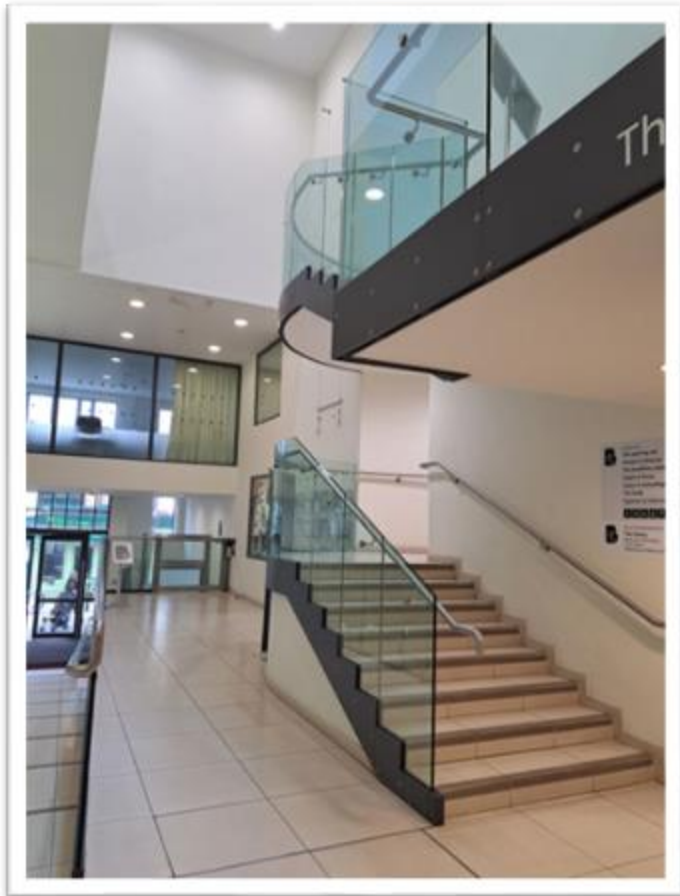
This room sometimes has things in it made by the local community of Canterbury. The gallery layout changes often and it looks different each time the topic changes, with different paintings and objects displayed.

There may be screens with film and audio sometimes.

If you would like to know what is on at the time of your visit, and what exhibitions are coming soon, you can ask staff or look on the Beaney website.

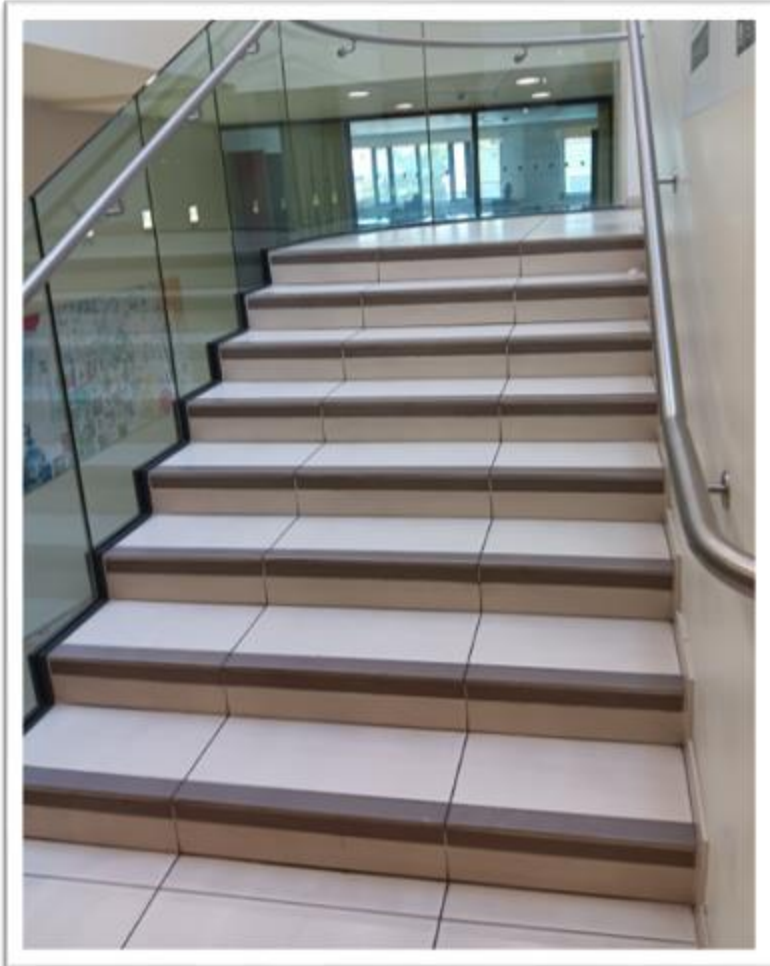
Now leave the Front Room and turn left. Go back the way you came, through the café back to the front desk.

You will see stairs on your left and a lift on your right. You can go upstairs in the lift or climb the stairs. If using the lift, press the 1 button.



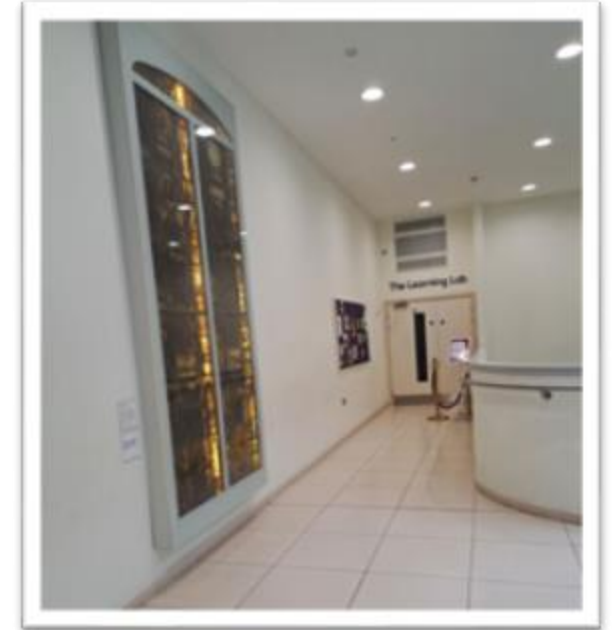
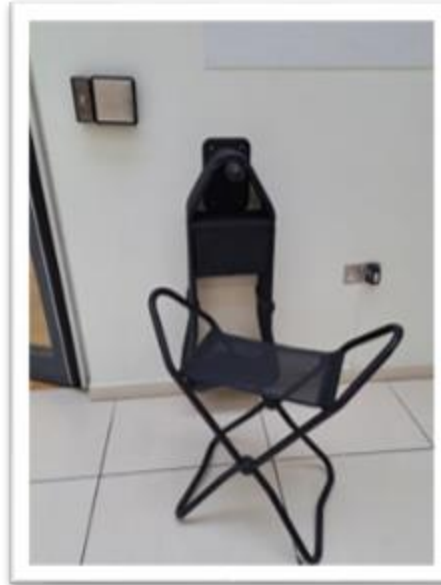
If you take the stairs, you will come to a mezzanine level first – this goes into the library.

Keep going upstairs to the first floor.



The first floor in The Beaney is also called **The Atrium**, it has another small shop with a member of staff sitting at a desk.

There are also folding stools that you can borrow and take with you around the museum to sit on.



In this space there are many doorways: one to the Special Exhibition Room, one to The People and Places Gallery and one to the Materials and Masters Gallery. The entrance to the Learning Lab is also from the Atrium space, this is only open to school groups and used for workshops.

- The **Special Exhibition Room** has glass doors that open by pressing the large yellow metal button on the wall.
- A member of staff inside near the door, can also open it for you.
- This is a large gallery that looks different each time there is a new exhibition in it.
- The walls might be in a different place and the room colour may change. There will always be a member of staff in here.
- Sometimes there is a children's activity area in this room.
- The exhibitions in this room change every few months to different topics.
- There may be screens with film and audio sometimes, but usually earphones are used to listen to the sound.
- If you would like to know what is on at the time of your visit, and what exhibitions are coming soon, you can ask staff or look on the Beaney website.

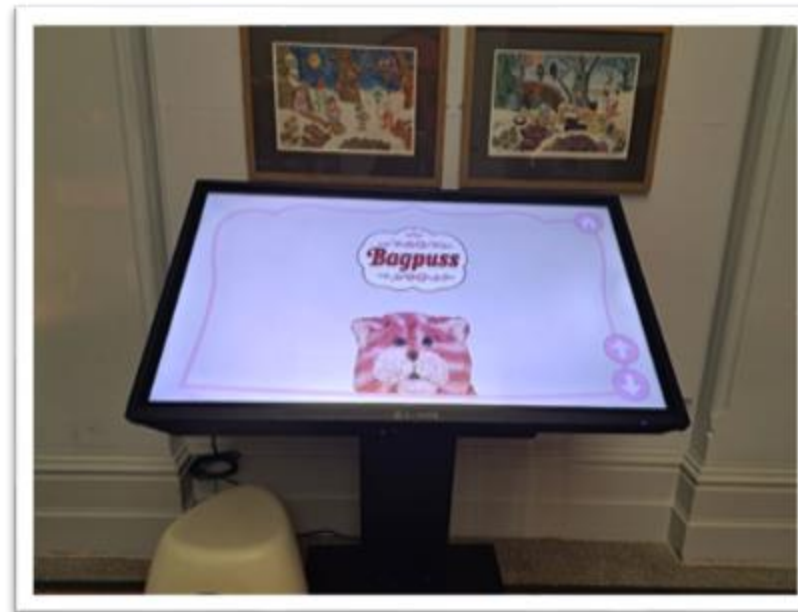


Now leave the Special Exhibition room. You can choose where to go next but for this route, turn left and go through the doorway into the blue gallery which is called **The People and Places Gallery**.



- In this room there are paintings of places and people and some big sculptures of people too.
- There is also a sculpture of the Red Dean which you can touch if you borrow gloves from the staff in the Atrium shop.
- There is a large mirror with dressing up clothes and an activity table with games on.
- You can find a stand that plays an audio description of artwork, with headphones.
- There is a Rupert the Bear display case in the middle of the room.
- There are benches for sitting on in this room.

Now go through an archway into the **Smallfilms Gallery**. This is named after the film company Smallfilms who made children's television programmes like Bagpuss. You can see the real puppets they used.



There is also a large screen which is interactive. You can touch it to choose pictures and sounds, which it plays out loud.

From this room go through the doorway on the left into the **Colour and Camouflage Gallery**.



The **Colour and Camouflage** gallery has natural history objects displayed by their colour.

There is also a door here leading to two public toilets.



Leave this gallery and go straight ahead into **The Study.**

This Gallery is about Dr James Beane who donated money to Canterbury to build this museum. The museum is named after him.

A painting of him and a 'cabinet of curiosities' including lots of objects are in this room.

There is also an activity table and some chairs here. There is a stand where you can lift a headphone, press a button and listen to an audio description of the lion skin in the case. You can adjust the level of volume for your preference.

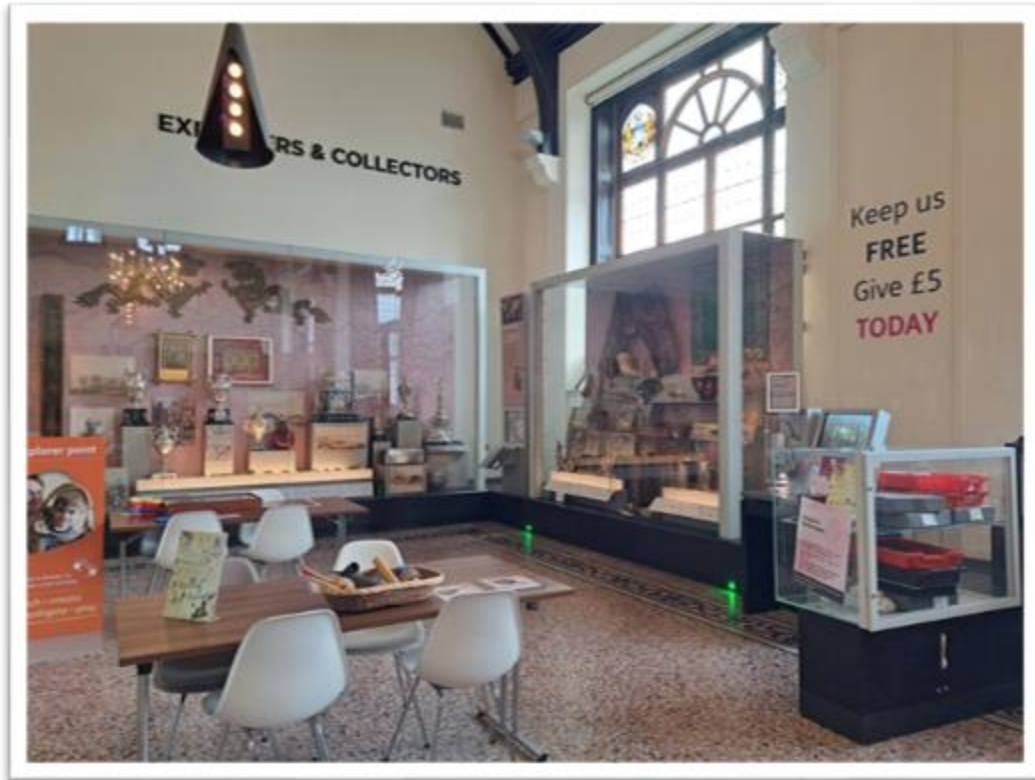


The top of the old staircase leads from this room and goes back down to the Garden Room. There are 32 stairs.

Now go straight ahead into the **Explorers and Collectors Gallery**

This is a large space and can be very noisy. The ceiling is high and the windows are open sometimes, so you can hear sound from the high street outside.

This gallery has lots of different objects from around the world and from different times.



This gallery always has a member of staff in it and there are activities on the tables they can help you with.

A member of staff will also have some museum objects to handle on a table. You will be able to touch them. Sometimes you will be able to wear cotton gloves.

Now go back the way you came until you are in the Smallfilms gallery. Turn left into a red room. This is the **Materials and Masters** gallery.



In the Materials and Masters Gallery there are paintings on the walls and lots of objects in large glass cases. The objects are displayed by what they are made from, their materials.

There is also a dolls house to play with in the middle of the room. It can be noisy when lots of families are here.

There is also a large dolls house in a case, which is lit up so you can see the tiny objects in it.



There is a bronze relief sculpture that you can touch which is a copy of the Virgin Mary and Child in the painting next to it.



From this gallery you can leave through the doorway back into **The Atrium** and either go down the stairs or use the lift back down to the ground floor.

When you are finished, you can leave by the front door onto the High Street or through the Accessible entrance onto Best Lane.

We hope you enjoyed your visit to The Beaney Museum today.

You can find out about our temporary exhibitions and events on our website:

www.thebeaney.co.uk

We are also on Facebook as The Beaney and Instagram as @The Beaney

